

99 olvasógyakorlat

az énekeskönyv dallamfordulatai alapján
összeállította Máté János
1990.



2



8. 



9. 



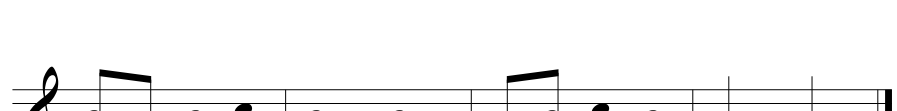

10. 



11. 

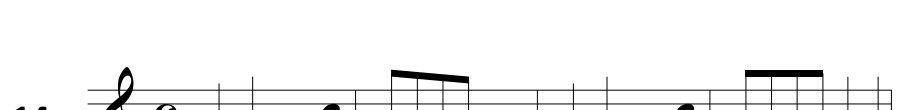


12. 

13. 



14. 




15. Musical notation for exercise 15, first staff. Treble clef, common time (C). The melody starts with a quarter note G4, followed by quarter notes A4, B4, and C5. A beamed eighth-note pair (D5, E5) is followed by a quarter note F5. The phrase ends with a quarter rest and a quarter note G4.

Musical notation for exercise 15, second staff. Treble clef, common time (C). The melody continues with quarter notes G4, A4, B4, and C5. A beamed eighth-note pair (D5, E5) is followed by quarter notes F5 and G5. The phrase ends with a quarter note G4.

16. Musical notation for exercise 16, first staff. Treble clef, 3/4 time. The melody starts with a quarter note G4, followed by quarter notes A4, B4, and C5. A beamed eighth-note pair (D5, E5) is followed by quarter notes F5 and G5. The phrase ends with a quarter note G4.

Musical notation for exercise 16, second staff. Treble clef, 3/4 time. The melody continues with quarter notes G4, A4, B4, and C5. A beamed eighth-note pair (D5, E5) is followed by quarter notes F5 and G5. The phrase ends with a quarter note G4.

17. Musical notation for exercise 17, first staff. Treble clef, 4/4 time. The melody starts with a quarter note G4, followed by quarter notes A4, B4, and C5. A beamed eighth-note pair (D5, E5) is followed by quarter notes F5 and G5. The phrase ends with a quarter note G4.

Musical notation for exercise 17, second staff. Treble clef, 4/4 time. The melody continues with quarter notes G4, A4, B4, and C5. A beamed eighth-note pair (D5, E5) is followed by quarter notes F5 and G5. The phrase ends with a quarter note G4.

18. Musical notation for exercise 18, first staff. Treble clef, 4/4 time. The melody starts with a quarter note G4, followed by quarter notes A4, B4, and C5. A beamed eighth-note pair (D5, E5) is followed by quarter notes F5 and G5. The phrase ends with a quarter note G4.

Musical notation for exercise 18, second staff. Treble clef, 4/4 time. The melody continues with quarter notes G4, A4, B4, and C5. A beamed eighth-note pair (D5, E5) is followed by quarter notes F5 and G5. The phrase ends with a quarter note G4.

19. Musical notation for exercise 19, first staff. Treble clef, 4/4 time with a key signature of one sharp (F#). The melody starts with a quarter note G4, followed by quarter notes A4, B4, and C5. A beamed eighth-note pair (D5, E5) is followed by quarter notes F5 and G5. The phrase ends with a quarter note G4.

Musical notation for exercise 19, second staff. Treble clef, 4/4 time with a key signature of one sharp (F#). The melody continues with quarter notes G4, A4, B4, and C5. A beamed eighth-note pair (D5, E5) is followed by quarter notes F5 and G5. The phrase ends with a quarter note G4.

20. Musical notation for exercise 20, first staff. Treble clef, 4/4 time with a key signature of one sharp (F#). The melody starts with a quarter note G4, followed by quarter notes A4, B4, and C5. A beamed eighth-note pair (D5, E5) is followed by quarter notes F5 and G5. The phrase ends with a quarter note G4.

Musical notation for exercise 20, second staff. Treble clef, 4/4 time with a key signature of one sharp (F#). The melody continues with quarter notes G4, A4, B4, and C5. A beamed eighth-note pair (D5, E5) is followed by quarter notes F5 and G5. The phrase ends with a quarter note G4.

21. Musical notation for exercise 21, first staff. Treble clef, 4/4 time with a key signature of two flats (Bb, Eb). The melody starts with a quarter note G4, followed by quarter notes A4, B4, and C5. A beamed eighth-note pair (D5, E5) is followed by quarter notes F5 and G5. The phrase ends with a quarter note G4.

Musical notation for exercise 21, second staff. Treble clef, 4/4 time with a key signature of two flats (Bb, Eb). The melody continues with quarter notes G4, A4, B4, and C5. A beamed eighth-note pair (D5, E5) is followed by quarter notes F5 and G5. The phrase ends with a quarter note G4.

22. Musical notation for exercise 22, first staff. Treble clef, 4/4 time with a key signature of two flats (Bb, Eb). The melody starts with a quarter note G4, followed by quarter notes A4, B4, and C5. A beamed eighth-note pair (D5, E5) is followed by quarter notes F5 and G5. The phrase ends with a quarter note G4.

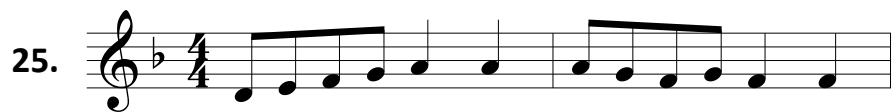
Musical notation for exercise 22, second staff. Treble clef, 4/4 time with a key signature of two flats (Bb, Eb). The melody continues with quarter notes G4, A4, B4, and C5. A beamed eighth-note pair (D5, E5) is followed by quarter notes F5 and G5. The phrase ends with a quarter note G4.

23. 



24. 



25. 




26. 



27. 



28. 



29. 



30. 



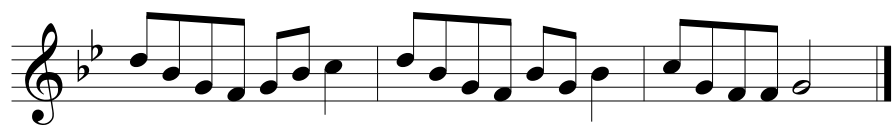
31. 



32. 



33. 



34. 



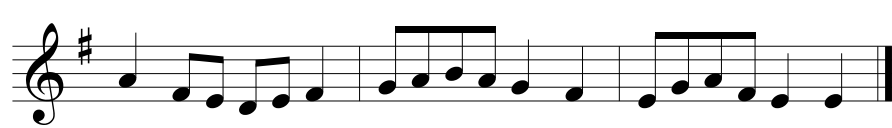
35. 



36. 

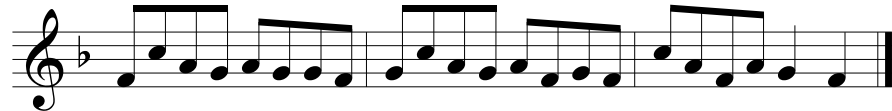
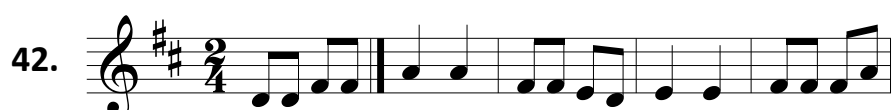


37. 



38. 

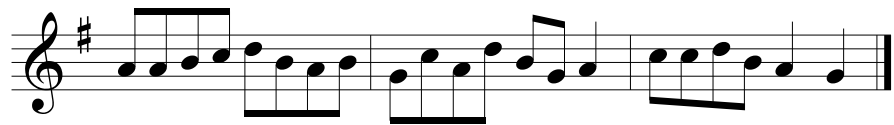




47. 



48. 



49. 



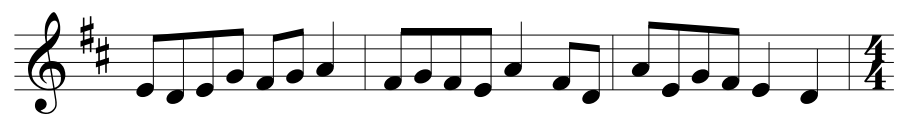
50. 



51. 



52. 



53. 



54. 



55. 




56. 

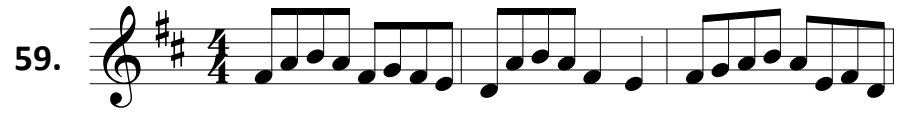



57. 




58. 



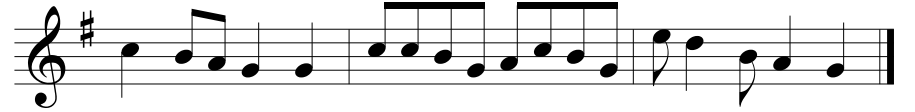
59. 



60. 



61. 



62. 